

Email not displaying correctly? [View this email in your browser](#)



**Chemical
Insights**

A Research Institute of Underwriters Laboratories Inc.

Volume 21
Aug. 2022

Foresight

*Highlighting Chemical Insights' Research and Education
for Safer Environments and Healthier People*

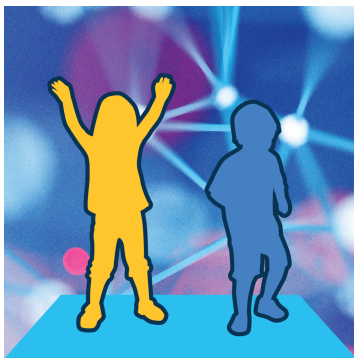
Our Featured Initiatives

Indoor Air Quality



Perchloroethylene – A Common Air Pollutant

The common air pollutant, perchloroethylene, is a chlorinated volatile organic compound often found in indoor and outdoor air. Perchloroethylene is commonly used as a dry-cleaning solvent. Dry-cleaned clothes and furnishings are often the primary sources of indoor emissions. Indoor exposure can lead to irritation of the eyes and upper respiratory tract, headaches, and dizziness. Chronic long-term exposure, which happens most frequently in occupational situations, can result in more significant health impacts such as liver and kidney damage, adverse reproductive effects, and reduced cognitive performance. Read more in our latest technical brief, [“Perchloroethylene - A Common Air Pollutant.”](#)



Solutions for Improving Your Indoor Air Quality this School Year

Maintaining healthy indoor air quality (IAQ) is critical to the health of students and staff who learn, work, and play in schools. To promote healthy IAQ at your school this year, learn more by reviewing our [curated actionable resources](#) and [eLearning videos](#). Additionally, Chemical Insights Research Institute (CIRI) will be presenting its research, "Impacts of 3D Printing and Mitigation Strategies on Particle Exposures in School Environments" during the [AAAR 40th Annual Conference](#), October 3-7 in Raleigh, NC, and continue its leadership role as part of the Indoor Air Quality Technical Advisory Committee for the [Center for Green Schools](#). This work highlights CIRI's dedication to advancing our public safety mission by promoting safe and healthy environments through scientific chemical insights.

Resiliency



CIRI Messages the Importance of Resiliency for Health to Design and Architecture Professionals

Discussions around resilient buildings are usually focused on their ability to withstand weather events that threaten exterior structures. But a resilient building also needs safe conditions inside, to protect occupant health and safety. Watch CIRI deliver innovative information to commercial interior design leaders on resiliency and strategies for healthy interiors in our newest video, "[Design It Healthy, Keep it Healthy](#)." To continue this conversation, CIRI will present the Ron Blank GreenCE, "[Design It Healthy, Keep It Healthy: Strategies to Support Resilient, Healthy Interiors](#)," to architecture professionals on September 20. Participants will learn research-based strategies and case studies to help specify resilient, healthy materials and employ resilient practices to leave with actionable information.

Flame Retardants and Furniture Flammability



CIRI Discusses Furniture Flammability and Human Health Research with Furniture Manufacturing Experts

CIRI recently presented its research on flame retardant exposure from upholstered furniture and the use of fire barriers to protect from chemical and fire risks, "Balancing Human Health and Fire Safety in the Built Environment," at the [American Home Furnishing Alliance's](#) (AHFA's) 2022 Summit. The AHFA Summit brings together

furniture manufacturers to review current regulatory issues as well as new science and safety topics affecting the residential furniture industry. The audience learned about CIRI's research on upholstered furniture, how flame retardant exposure can occur, and how the use of a furniture fire barrier between the external cover fabric textile and the polyurethane foam padding can eliminate the need for chemical flame retardants while providing flammability protection. Visit CIRI's [Furniture Flammability and Human Health webpage](#) for more information including published research, a guidance document, and educational materials.

CIRI Happenings



Join Our Team

CIRI is recruiting key science talent to join our team! Our organization is dedicated to scientific discovery research, education, and communication of environmental exposures and steps for reducing human risks. We are seeking driven, results-oriented, and passionate people who want to contribute to safe working, living, and learning environments.

- [Director of Global Air Quality Research](#)
- [Senior Toxicologist](#)
- [Post-Doctoral Researcher](#)
- [Data Scientist](#)

Recent Publications and Events



Publications:

- Technical Brief, ["Perchloroethylene - A Common Air Pollutant."](#)

Visit us to hear about our research at conferences:

- [Ron Blank GreenCE Academy](#), September 20, 2022, "Design It Healthy, Keep It Healthy: Strategies to Support Resilient, Healthy Interiors"
- [2022 IFMA World Workplace](#), September 28-30, 2022, "Chemistry 101 for Building Managers"
- [AAAR 40th Annual Conference](#), October 3-7, 2022, "Impacts of 3D Printing and Mitigation Strategies on Particle Exposures in School Environments"
- [2022 CSHEMA Fall Symposium](#), October 11-12, 2022, "From Research to Impact – Storytelling Science for a Safer World"
- [IFMA Environmental Stewardship Utilities, and Sustainability Communities Webinar](#), October 19,



Copyright © 2022 Underwriters Laboratories Inc., All rights reserved.

Want to change how you receive these emails?

You can [update your preferences](#) or [unsubscribe from this list](#).